



Dragonfly® Single Channel Laryngeal Surface Electrode Intubation Instructions

Reliable performance of Dragonfly® electrodes requires proper positioning. Please follow these instructions carefully and avoid using long-acting paralytics.

Applying electrode:

- 1) Choose any non-silicon ET tube and the appropriate electrode based on the ET size chart below:

ET Tube ID Size	Dragonfly Electrode Item Code
6.0 - 7.0mm	LSE500MS
7.5 - 10.0mm	LSE500M

Before application, the tube should be kept clean and free of any lubricants or other materials that may inhibit electrode adhesion.

- 2) Determine the location where the vocal cords will be in contact with the ET tube after intubation. The middle of the electrode will be applied at this location with the wires directed toward the mouth. (fig 1)
- 3) Turn over and straighten the ET tube to expose what will be the posterior side when intubated. Use of a straightened stylet facilitates hands-free straightening of the ET tube.
- 4) Align electrode's midline with the midline of the posterior portion of the tube. Press electrode down, wrapping it toward the top (anterior) side of the tube. (fig. 2) Press along the entire surface and edge to ensure proper adhesion.

Note: Electrode plates should not touch after wrapping.



Figure 1

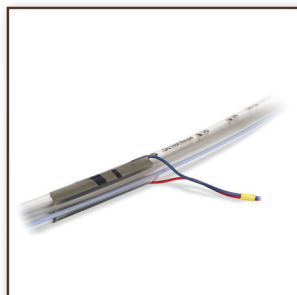


Figure 2

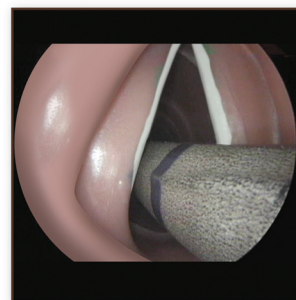


Figure 3



Figure 4

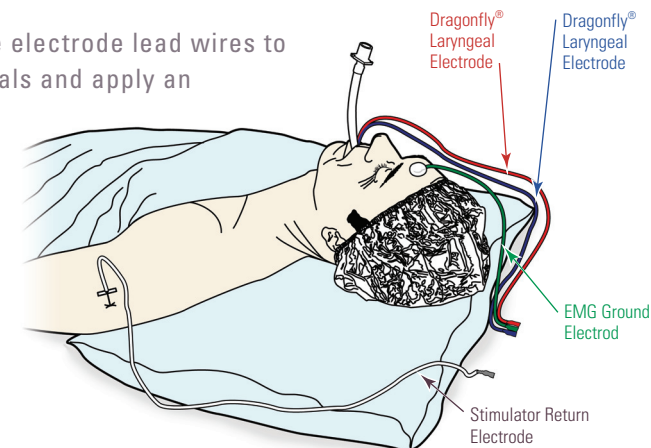
Intubation*:

- 1) A small amount of lubricant may be applied to the electrode. Insert the ET tube under direct vision or with a video laryngoscope so that each vocal cord is touching its respective electrode plate and rests between the two blue positioning stripes. (fig. 3)

Note the depth number on the ET tube against the maxillary central incisors before any further positioning of the patient.

- 2) Tape the ET tube securely with 2 pieces of tape by wrapping each piece first around the tube and then securing to the upper lip. (fig. 4)
- 3) Tightly secure the breathing circuits so the ET tube will not rotate or be displaced and then verify final electrode position by laryngoscopy with a #3 Miller Blade or with a video laryngoscope.
- 4) After final positioning of patient, align ET tube in the middle of the pharynx behind the tongue. The posterior portion of the ET tube should be directly opposite the central maxillary incisor gap at the depth number noted after initial positioning.
- 5) Attach the red and blue electrode lead wires to the + and - EMG terminals and apply an EMG ground.

* Intubation with Dragonfly® electrodes for longer than 8 hours is not recommended.



Neurovision™ Medical Products

Ventura, CA 93003
tel: (866) 815-6999
fax: (877) 330-1727

www.neurovisionmedical.com

